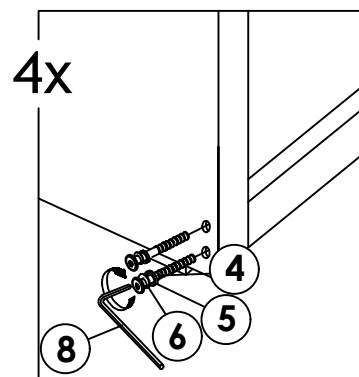
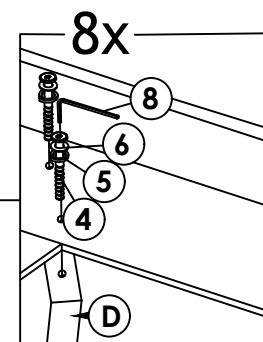
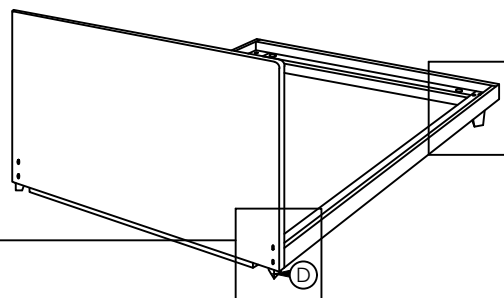


STEP 3

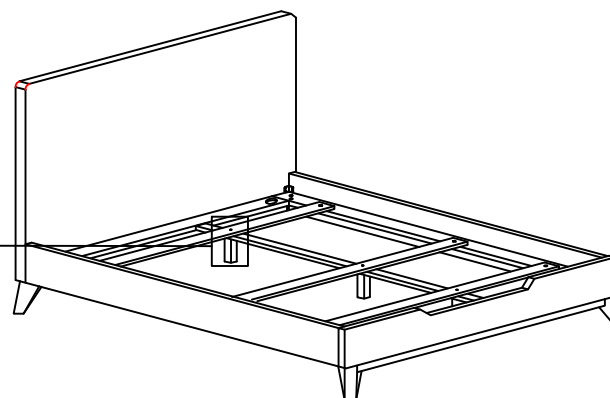
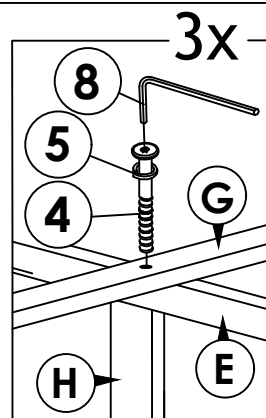


STEP 3.1

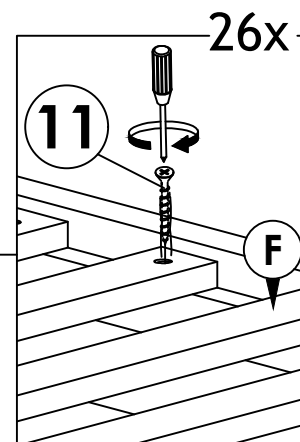
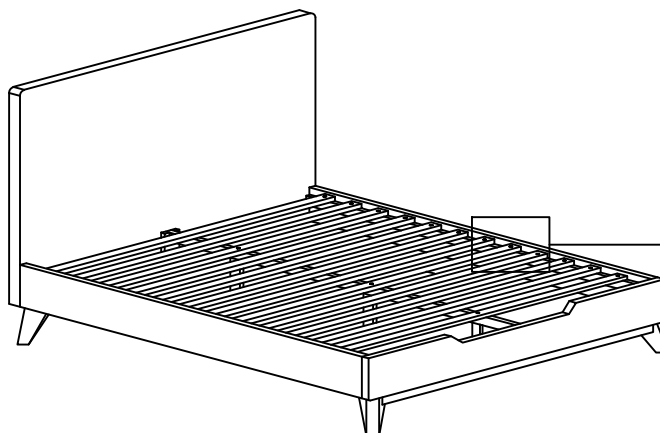


STEP 3.2

STEP 4



STEP 5



ASSEMBLY COMPLETELY

# ASSEMBLY INSTRUCTIONS

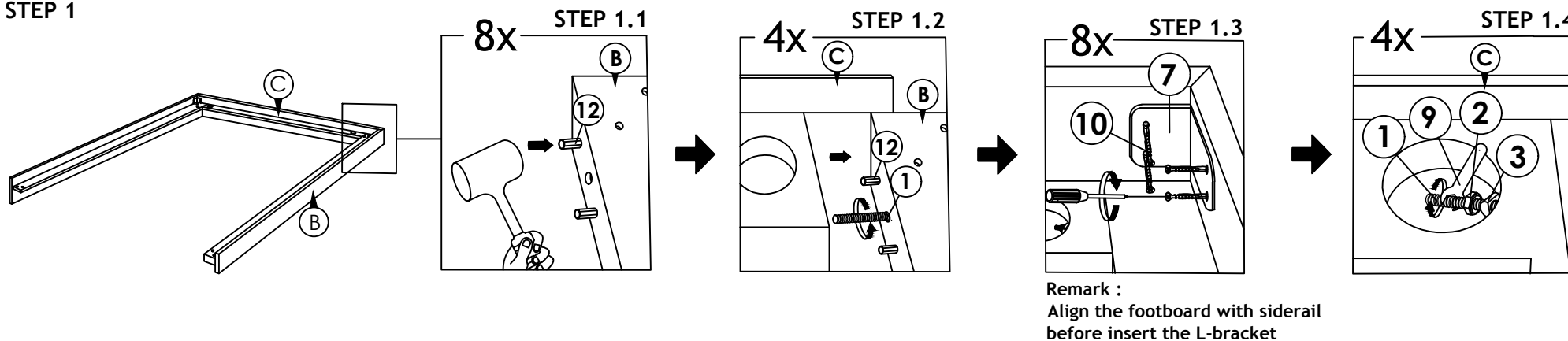
Read this instruction carefully. Refer hardware and furniture parts list for guidance. Be sure all parts are complete, before assembling. Place all wooden furniture part on a clean and flat soft surface to prevent scratches. Refer steps provided as assembling guide.

## CAUTIONS :

1. Do not **FULLY-TIGHTEN** the nuts or nut bolts until all are in place.
2. To prevent thread damage. Ensure that nuts or nut bolts are not over-tighten.
3. Hardware are to be kept out of reach from children.

PART LIST			HARDWARE LIST		
ITEM	DESCRIPTION	QTY	ITEM	DESCRIPTION	QTY
A	HEADBOARD	1 PC	1	BOLT X 70MM	4 PCS
B	SIDERAIL (L & R)	2 PCS	2	HEX NUT M6	4 PCS
C	FOOTBOARD	1 PC	3	PLASTIC WASHER	4 PCS
D	BED LEG	4 PCS	4	JCBC M6 X 50MM	15 PCS
E	CENTER RAIL	1 PC	5	SPRING WASHER	15 PCS
F	SLAT	10 PCS	6	FLAT WASHER	12 PCS
G	SLAT WITH HOLE	3 PCS	7	L-BRACKET(BLK)	4 PCS
H	LEG SUPPORT	3 PCS	8	M4 ALLEN KEY (SHORT)	1 PC
			9	SPANNER	1 PC
			10	CSK SCREW X 20MM	16 PCS
			11	CSK SCREW X 32MM	26 PCS
			12	WOOD DOWEL DIA 8 X 35MM	8 PCS

## STEP 1



## STEP 2

