

# ASSEMBLY INSTRUCTIONS

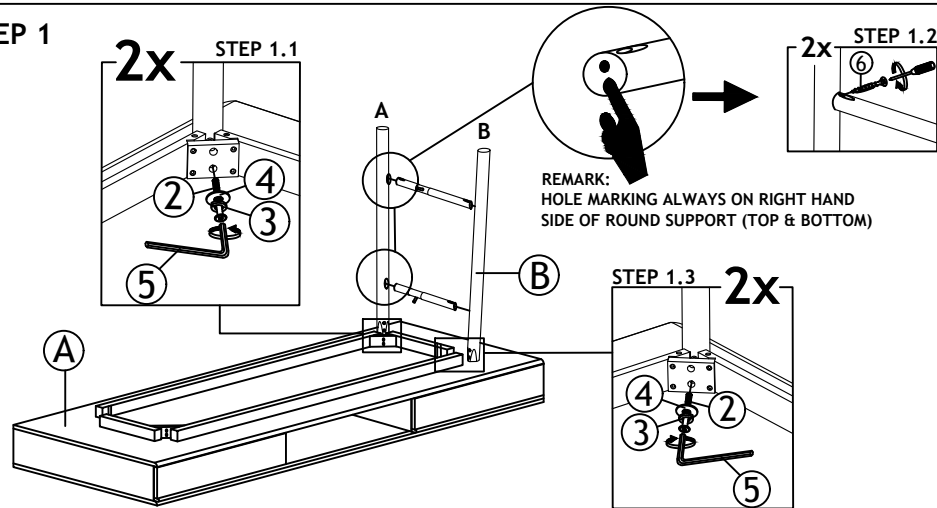
Read this instruction carefully. Refer hardware and furniture parts list for guidance. Be sure all parts are complete, before assembling. Place all wooden furniture part on a clean and flat soft surface to prevent scratcheds. Refer steps provided as assembling guide.

## CAUTIONS :

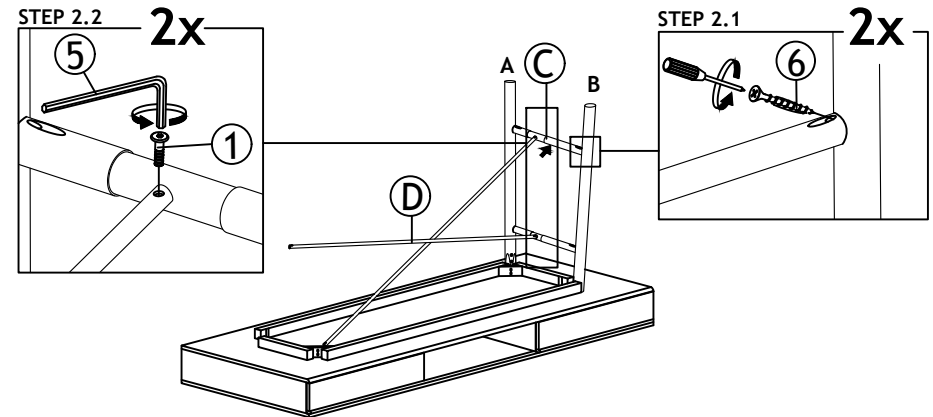
- 1.Do not **FULLY-TIGHTEN** the nuts or nut bolts until all are in place.
- 2.To prevent thread damage.Ensure that nuts or nut bolts are not over-tighten.
- 3.Hardware are to be kept out of reach from children.

PART LIST			HARDWARE LIST		
ITEM	DESCRIPTION	QTY	ITEM	DESCRIPTION	QTY
A	STUDY DESK	1 PC	1	JCBC SCREW M6 X 10MM	4 PCS
B	LEG ( L & R)	4 PCS	2	JCBC SCREW M6 X 60MM	8 PCS
C	LEG SUPPORT ( T & B)	4 PCS	3	SPRING WASHER $\frac{1}{4}$ "	8 PCS
D	METAL LEG SUPPORT	2 PCS	4	FLAT WASHER $\frac{1}{4}$ "	8 PCS
			5	M4 ALLEN KEY (BALL SHAPE) LONG	1 PC
			6	PAN HEAD SCREW M5 x 32MM	4 PCS

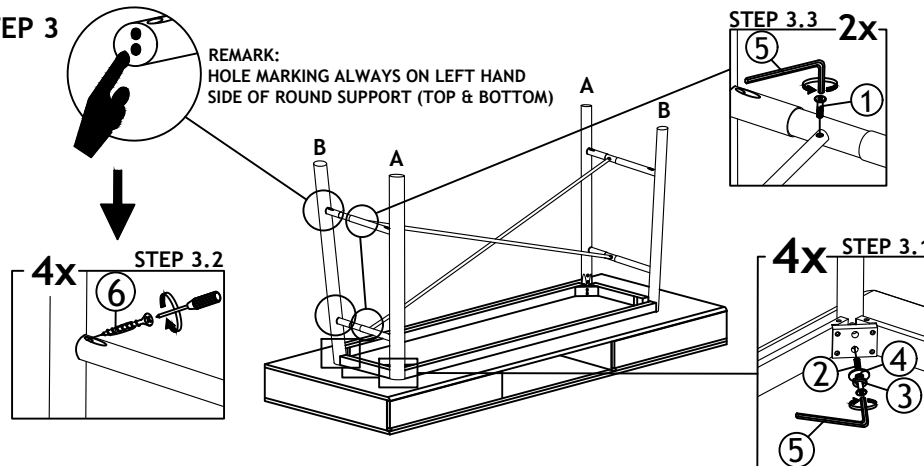
## STEP 1



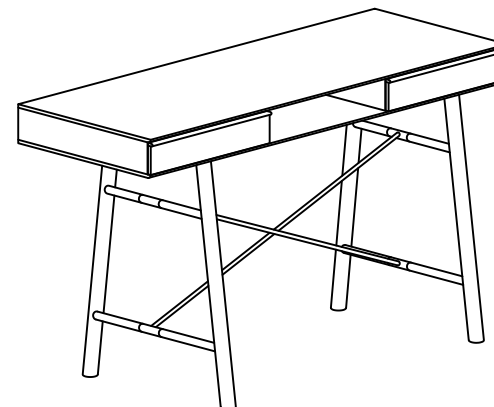
## STEP 2



## STEP 3



## STEP 4



ASSEMBLY COMPLETED