





ASSEMBLY INSTRUCTIONS

Read these instructions carefully. Refer to hardware and furniture parts list for guidance. Be sure all parts are complete, before assembling. Place all wooden furniture parts on a clean and flat soft surface to prevent scratches. Refer to steps provided as assembling guide.

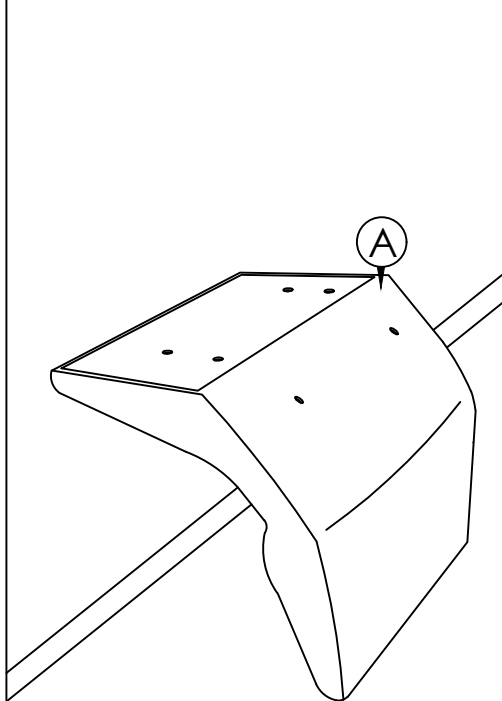
CAUTIONS :

- 1.Do not **FULLY-TIGHTEN** the nuts or nut bolts until all are in place.
- 2.To prevent thread damage.Ensure that nuts or nut bolts are not over-tightened.
- 3.Hardware is to be kept out of reach of children.

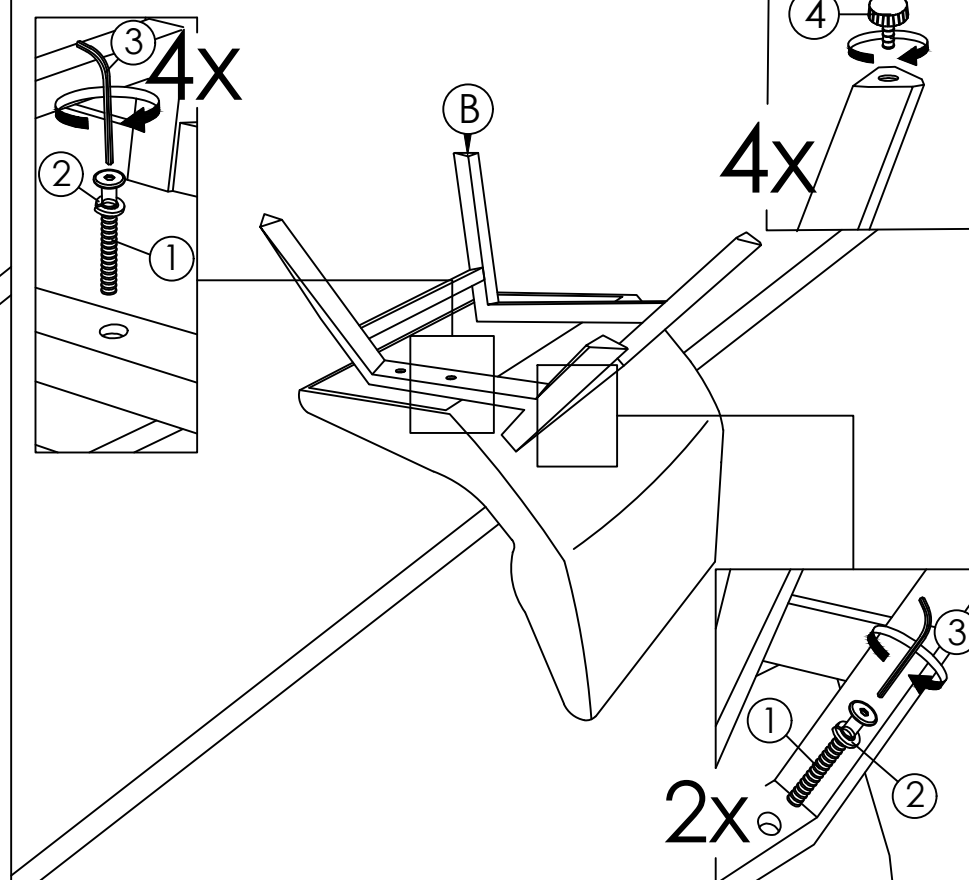
PART LIST		
ITEM	DESCRIPTION	QTY
A	CUSHION SEAT	1 PC
B	LEGS	1 SET

HARDWARE LIST		
ITEM	DESCRIPTION	QTY
1	JCBC SCREW M6 x 40MM 	6 PCS
2	SPRING WASHER 1/4" 	6 PCS
3	ALLEN KEY M4 (BALL SHAPE) 	1 PC
4	ADJUSTABLE SCREW 	4 PCS

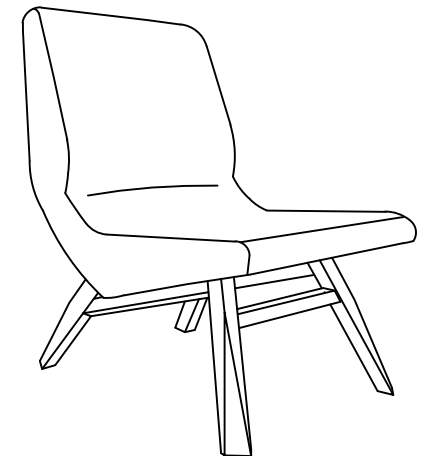
STEP 1 :



STEP 2 :



STEP 3 :



COMPLETED CHAIR ASSEMBLY