

ASSEMBLY INSTRUCTIONS

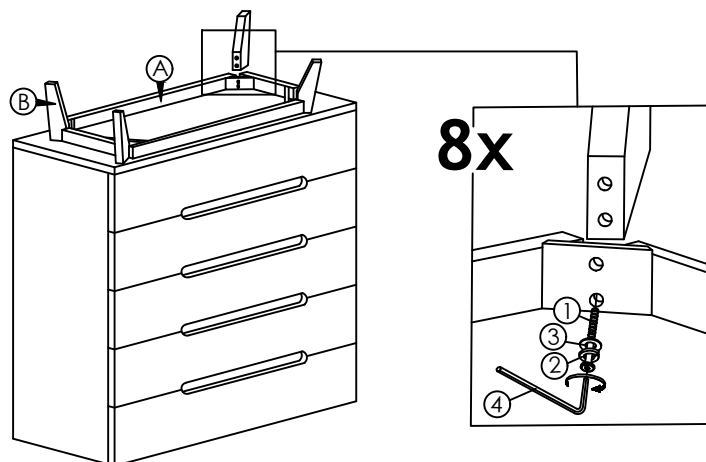
Read this instruction carefully. Refer hardware and furniture parts list for guidance. Be sure all parts are complete, before assembling. Place all wooden furniture part on a clean and flat soft surface to prevent scratches. Refer steps provided as assembling guide.

PART LIST			HARDWARE LIST		
ITEM	DESCRIPTION	QTY	ITEM	DESCRIPTION	QTY
A	CHEST DRAWER	1 PC	1	JCBC SCREW M6 X 80MM	8 PCS
B	LEG	4 PCS	2	SPRING WASHER 1/4 "	8 PCS
			3	FLAT WASHER 1/4 "	8 PCS
			4	M4 ALLEN KEY (BALL SHAPE) LONG	1 PC
			5	WALL SCREW M4 x 18MM	1 PC
			6	WALL SCREW M4 x 50MM	1 PC
			7	L- BRACKET	2 PCS
			8	BELT	1 PC

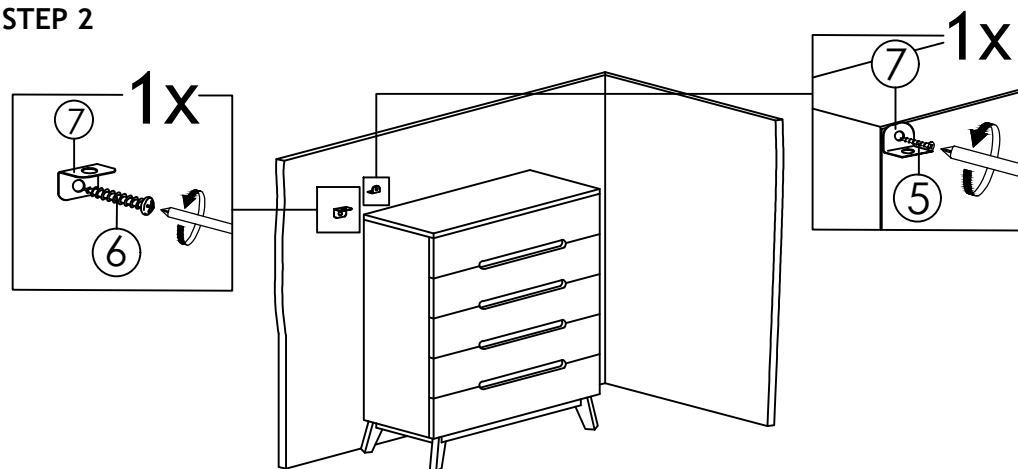
CAUTIONS :

- 1.Do not **FULLY-TIGHTEN** the nuts or nut bolts until all are in place.
- 2.To prevent thread damage.Ensure that nuts or nut bolts are not over-tighten.
- 3.Hardware are to be kept out of reach from children.

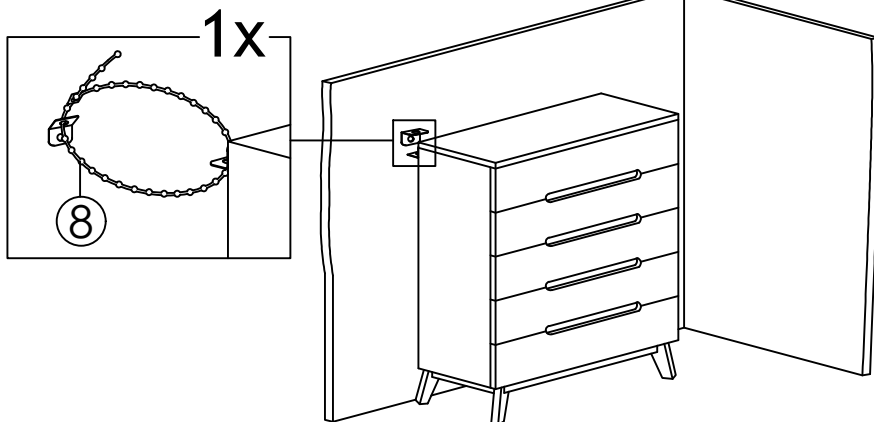
STEP 1



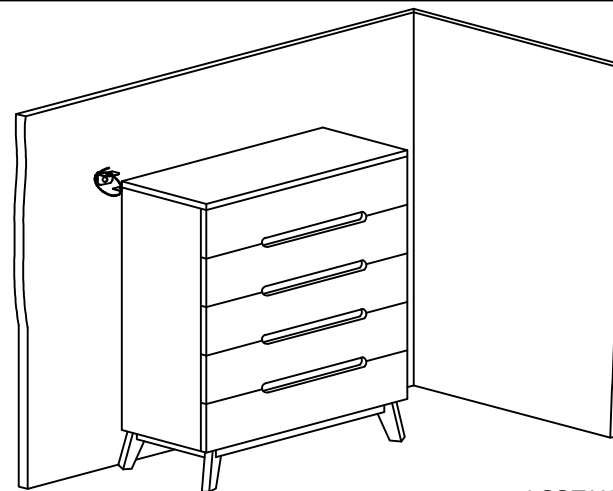
STEP 2



STEP 3



STEP 4



ASSEMBLY COMPLETED