

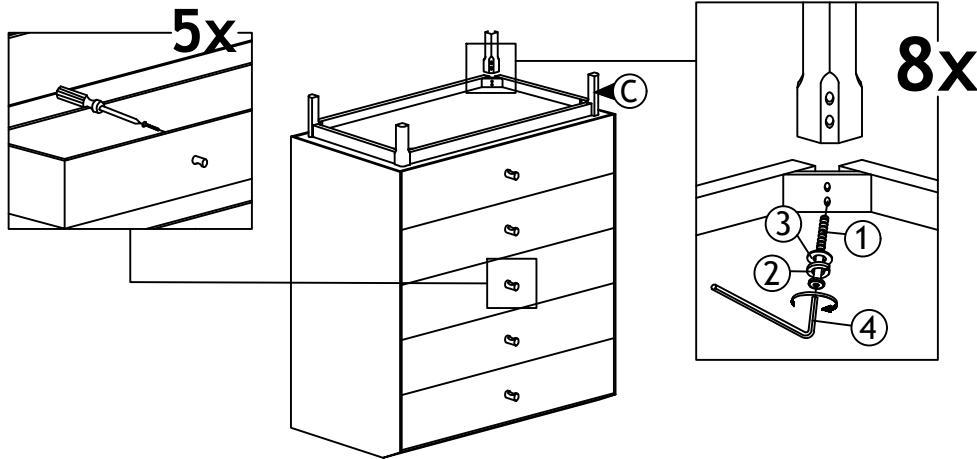
ASSEMBLY INSTRUCTIONS

Read this instruction carefully. Refer hardware and furniture parts list for guidance. Be sure all parts are complete, before assembling. Place all wooden furniture part on a clean and flat soft surface to prevent scratches. Refer steps provided as assembling guide.

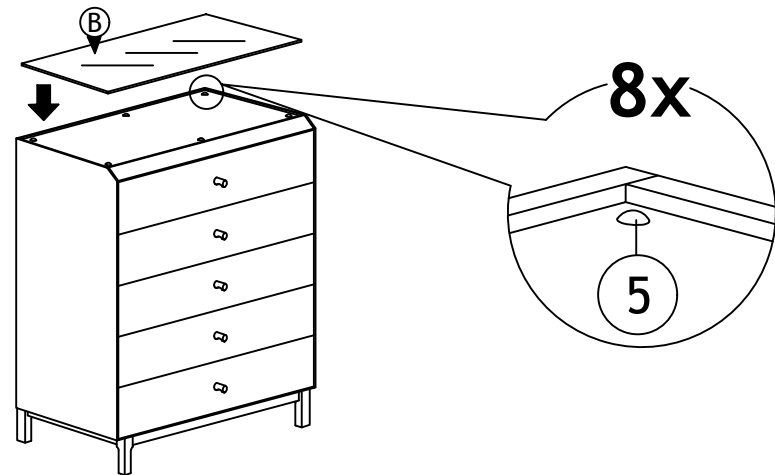
CAUTIONS :

1. Do not **FULLY-TIGHTEN** the nuts or nut bolts until all are in place.
2. To prevent thread damage. Ensure that nuts or nut bolts are not over-tighten.
3. Hardware are to be kept out of reach from children.

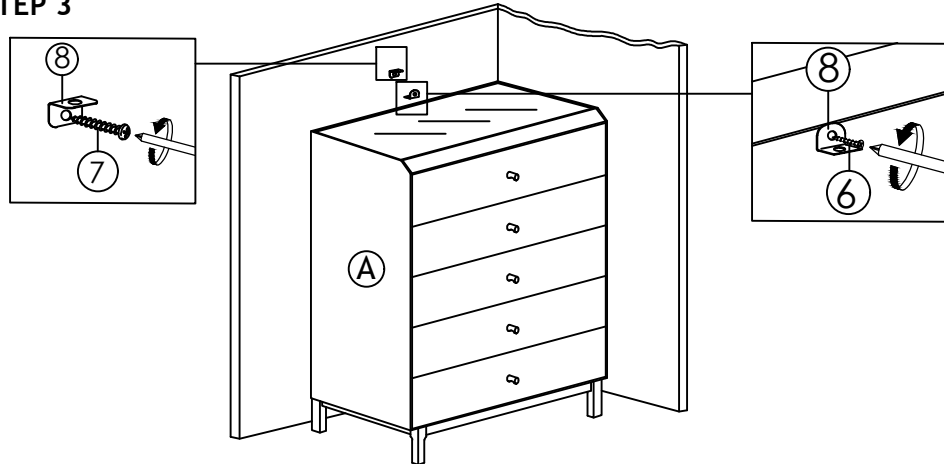
PART LIST			HARDWARE LIST		
ITEM	DESCRIPTION	QTY	ITEM	DESCRIPTION	QTY
A	CHEST	1 PC	1	JCBC SCREW M6 x 60mm	8 PCS
B	GLASS	1 PC	2	SPRING WASHER $\frac{1}{4}$ "	8 PCS
C	LEG	4 PCS	3	FLAT WASHER $\frac{1}{4}$ "	8 PCS
			4	M4 ALLEN KEY (BALL SHAPE) LONG	1 PC
			5	TRANSPARENT RUBBER	6 PCS
			6	WALL SCREW M4 x 18MM	1 PC
			7	WALL SCREW M4 x 50MM	1 PC
9	BELT	1 PC	8	L-BRACKET	2 PCS



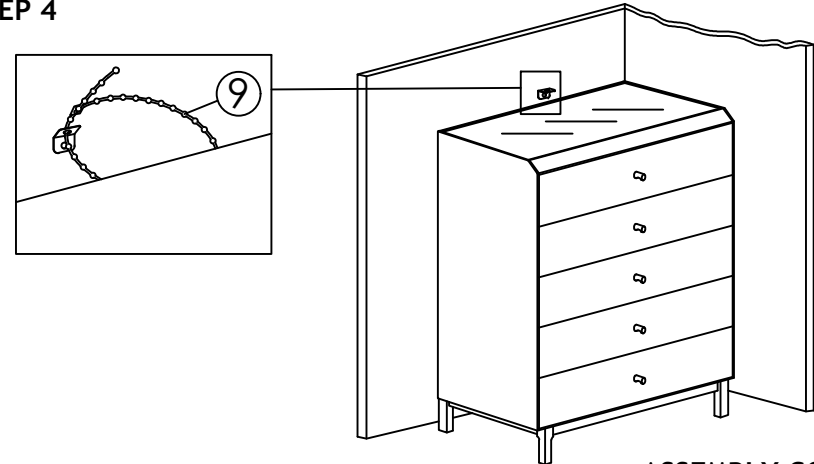
STEP 2



STEP 3



STEP 4



ASSEMBLY COMPLETED