









ASSEMBLY INSTRUCTIONS

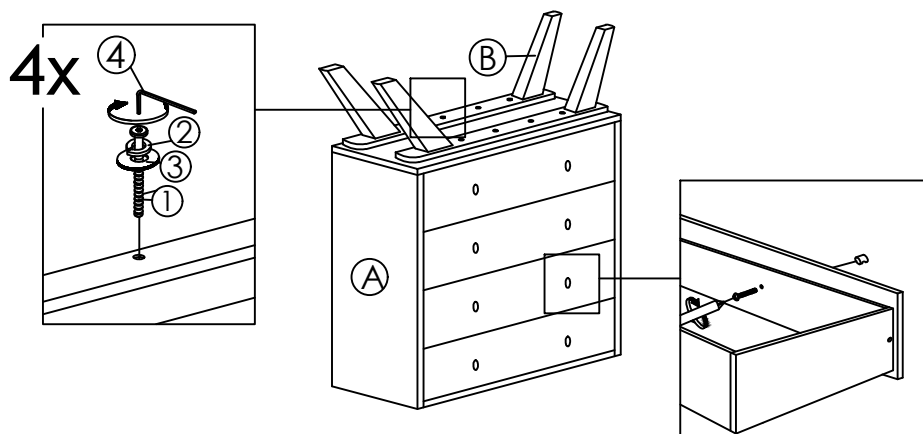
Read this instruction carefully. Refer hardware and furniture parts list for guidance. Be sure all parts are complete, before assembling. Place all wooden furniture part on a clean and flat soft surface to prevent scratches. Refer steps provided as assembling guide.

CAUTIONS :

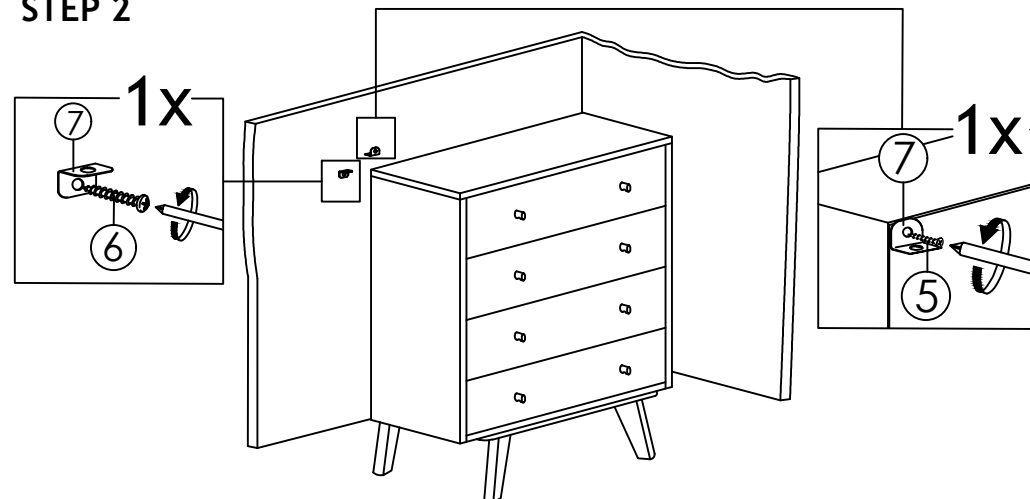
- 1.Do not **FULLY-TIGHTEN** the nuts or nut bolts until all are in place.
- 2.To prevent thread damage.Ensure that nuts or nut bolts are not over-tightened.
- 3.Hardware is to be kept out of reach of children.

PART LIST			HARDWARE LIST		
ITEM	DESCRIPTION	QTY	ITEM	DESCRIPTION	QTY
A	CHEST DRAWER	1 PC	1	JCBC SCREW M6 x 40MM 	8 PCS
B	CHEST DRAWER LEG	2 PCS	2	SPRING WASHER 1/4" 	8 PCS
			3	FLAT WASHER 1/4" 	8 PCS
			4	ALLEN KEY M4 (BALL SHAPE) LONG 	1 PC
7	L-BRACKET 	2 PCS	5	WALL SCREW M4 x 18MM 	1 PC
8	BELT 	1 PC	6	WALL SCREW M4 x 50MM 	1 PC

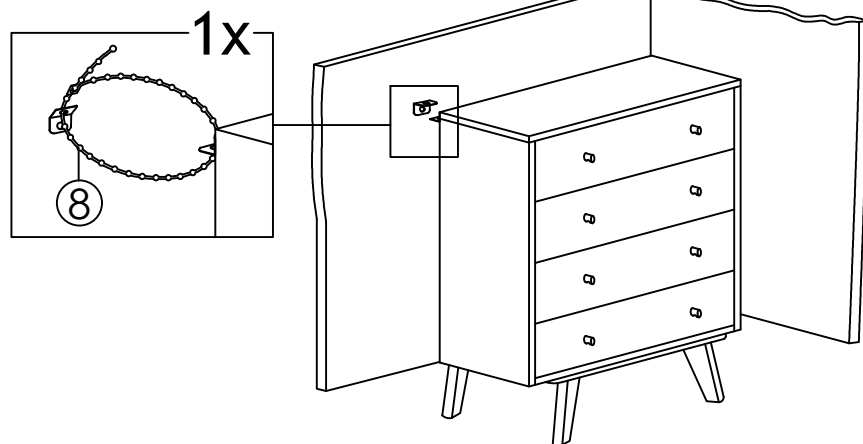
STEP 1



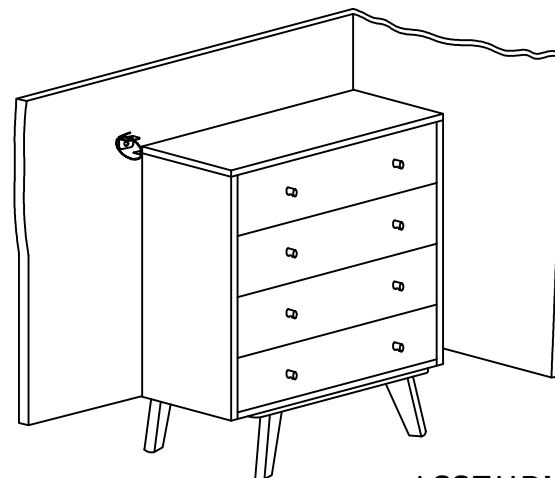
STEP 2



STEP 3



STEP 4



ASSEMBLY COMPLETED