

ASSEMBLY INSTRUCTIONS

Read these instructions carefully. Refer to hardware and furniture parts list for guidance. Be sure all parts are complete, before assembling. Place all wooden furniture parts on a clean and flat soft surface to prevent scratches. Refer to steps provided as assembling guide.

CAUTIONS :

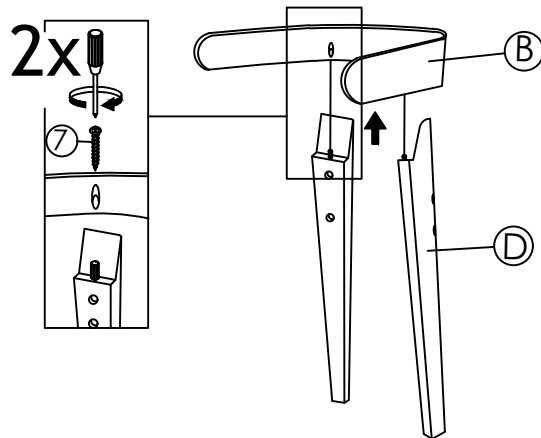
1. Do not **FULLY-TIGHTEN** the nuts or nut bolts until all are in place.
2. To prevent thread damage. Ensure that nuts or nut bolts are not over-tightened.
3. Hardware is to be kept out of reach of children.

PART LIST		
ITEM	DESCRIPTION	QTY
A	CUSHION BACK	1 PC
B	BACK VENEER	1 PC
C	FRONT LEG (L & R)	2 PCS
D	BACK LEG	2 PCS

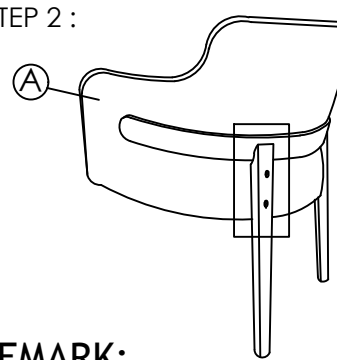
8	BASE GLIDE C99 M6 x 16mm	4 PCS
---	--------------------------	-------

HARDWARE LIST		
ITEM	DESCRIPTION	QTY
1	JCBC SCREW M6 x 35MM	4 PCS
2	JCBC SCREW M6 x 40MM	4 PCS
3	SPRING WASHER 1/4"	8 PCS
4	FLAT WASHER 1/4"	4 PCS
5	M4 ALLEN KEY (BALL SHAPE) LONG	1 PC
6	WOOD BUTTON 14.5mm	4 PCS
7	PAN HEAD WOOD SCREW M5 X 32mm	2 PCS

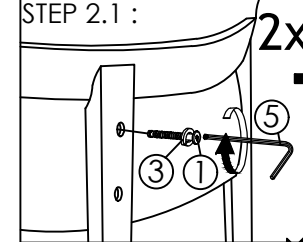
STEP 1 :



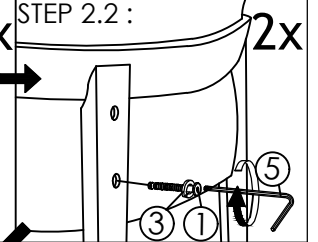
STEP 2 :



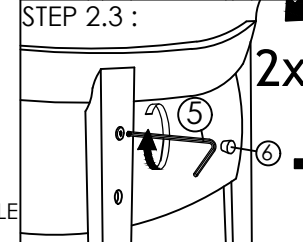
STEP 2.1 :



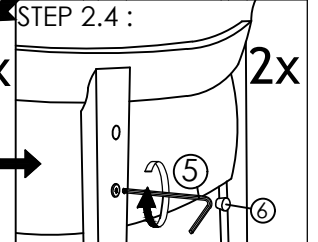
STEP 2.2 :



STEP 2.3 :



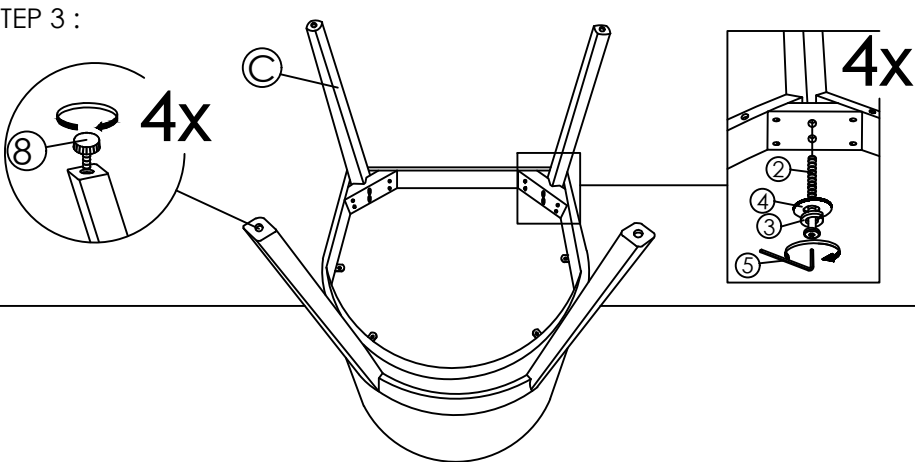
STEP 2.4 :



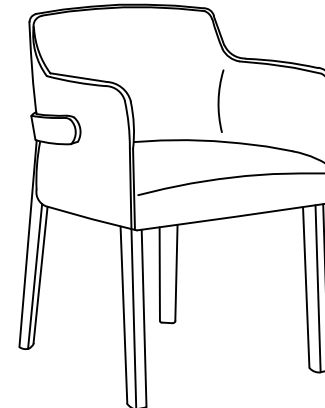
REMARK:

STEP 2.1 & 2.2 : FIXED SCREW IN HOLE (UN-FULLY TIGHTEN)
STEP 2.3 & 2.4 : TIGHTEN SCREW IN HOLE

STEP 3 :



STEP 4 :



COMPLETED ASSEMBLY