

# ASSEMBLY INSTRUCTIONS

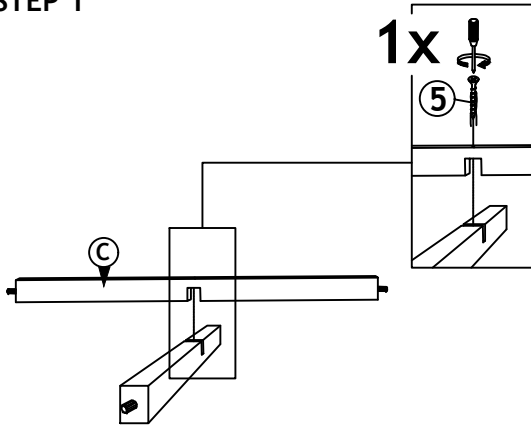
Read this instruction carefully. Refer hardware and furniture parts list for guidance. Be sure all parts are complete, before assembling. Place all wooden furniture part on a clean and flat soft surface to prevent scratcheds. Refer steps provided as assembling guide.

## CAUTIONS :

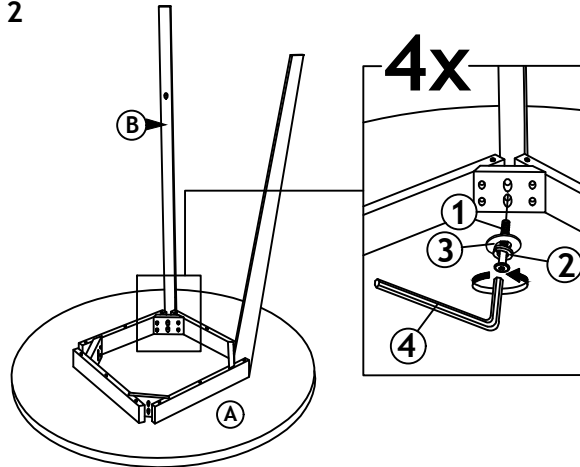
- 1.Do not **FULLY-TIGHTEN** the nuts or nut bolts until all are in place.
- 2.To prevent thread damage.Ensure that nuts or nut bolts are not over-tighten.
- 3.Hardware are to be kept out of reach from children.

PART LIST			HARDWARE LIST		
ITEM	DESCRIPTION	QTY	ITEM	DESCRIPTION	QTY
A	TABLE TOP	1 PC	1	JCBB SCREW M8 X 70MM	8 PCS
B	TABLE LEG	4 PCS	2	SPRING WASHER 5/16"	8 PCS
C	LEG SUPPORT (L & R)	2 PCS	3	FLAT WASHER 5/16"	8 PCS
			4	M5 ALLEY KEY	1 PC
			5	PAN HEAD SCREW M4 x 25MM	1 PC
			6	PAN HEAD SCREW M5 x 32MM	4 PCS

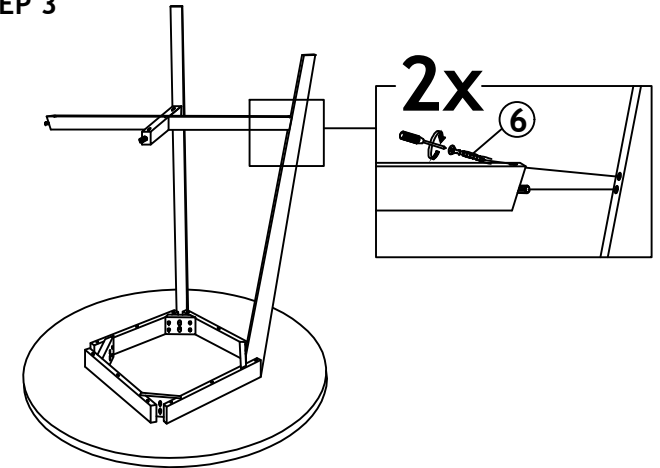
## STEP 1



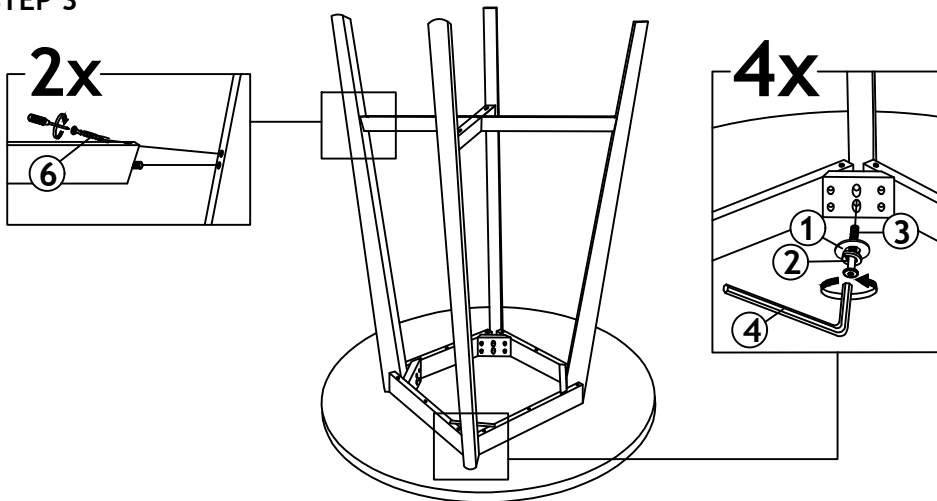
## STEP 2



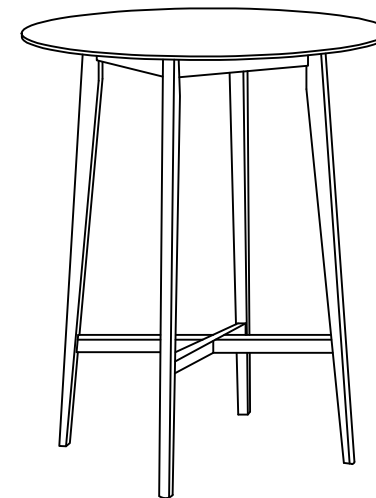
## STEP 3



## STEP 3



## STEP 4



ASSEMBLY COMPLETED