


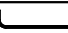




ASSEMBLY INSTRUCTIONS

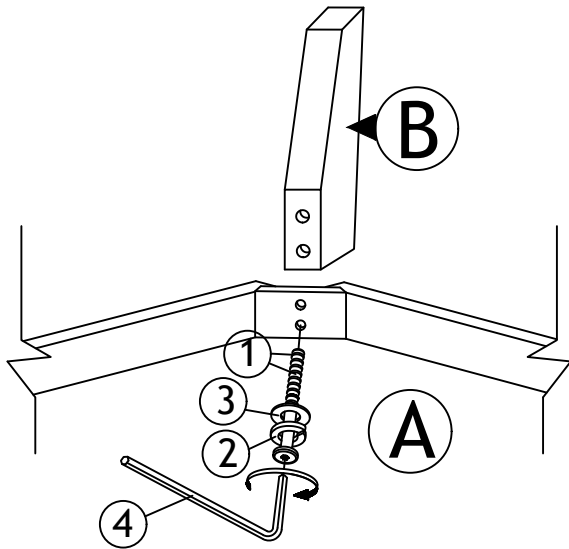
Read this instruction carefully. Refer hardware and furniture parts list for guidance. Be sure all parts are complete, before assembling. Place all wooden furniture part on a clean and flat soft surface to prevent scratcheds. Refer steps provided as assembling guide.

CAUTIONS :

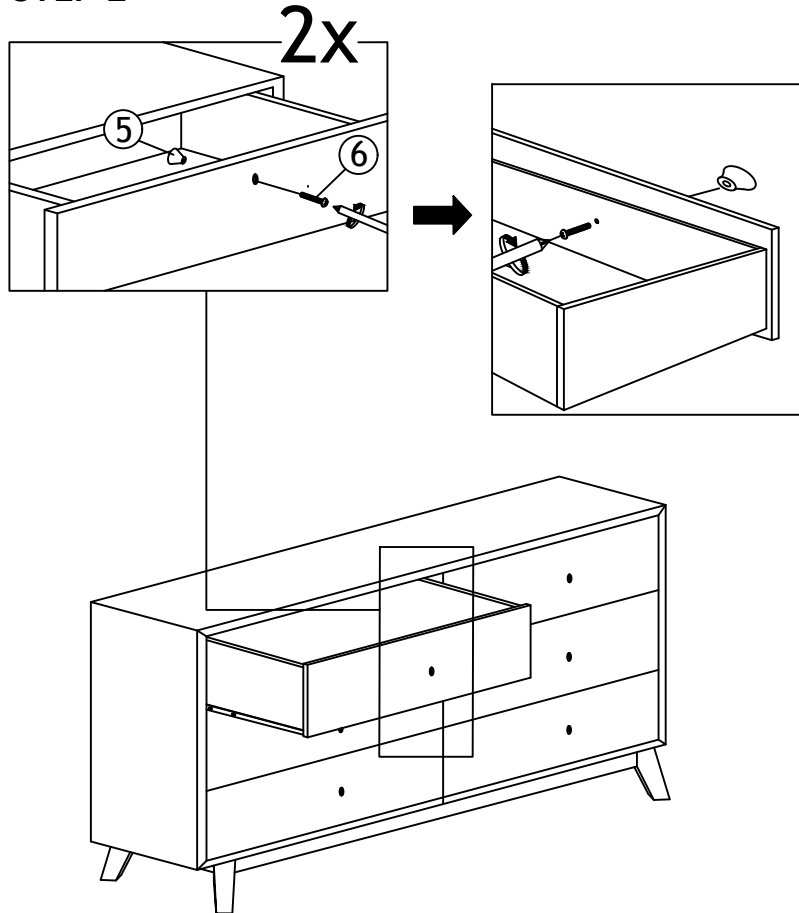
- 1.Do not **FULLY-TIGHTEN** the nuts or nut bolts until all are in place.
- 2.To prevent thread damage.Ensure that nuts or nut bolts are not over-tightened.
- 3.Hardware is to be kept out of reach of children.

| PART LIST | | | HARDWARE LIST | | |
|-----------|-------------|-------|---------------|---|-------|
| ITEM | DESCRIPTION | QTY | ITEM | DESCRIPTION | QTY |
| A | DRESSER | 1 PC | 1 | JCBC SCREW M6 X 60MM  | 8 PCS |
| B | LEG | 4 PCS | 2 | SPRING WASHER $\frac{1}{4}$ "  | 8 PCS |
| | | | 3 | FLAT WASHER $\frac{1}{4}$ "  | 8 PCS |
| | | | 4 | ALLEN KEY M4 (BALL SHAPE)LONG  | 1 PC |
| | | | 5 | HANDLE  | 6 PCS |
| | | | 6 | SCREW HANDLE M4 x 38MM  | 6 PCS |

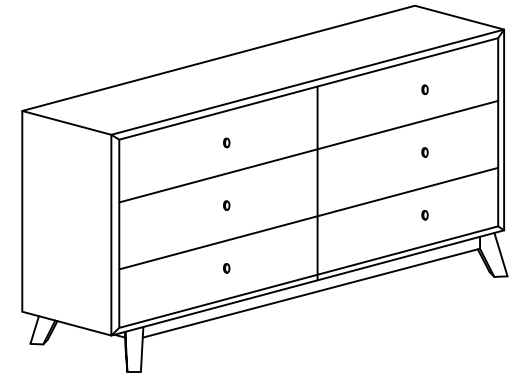
STEP 1



STEP 2



STEP 3



ASSEMBLY COMPLETED