

# ASSEMBLY INSTRUCTIONS

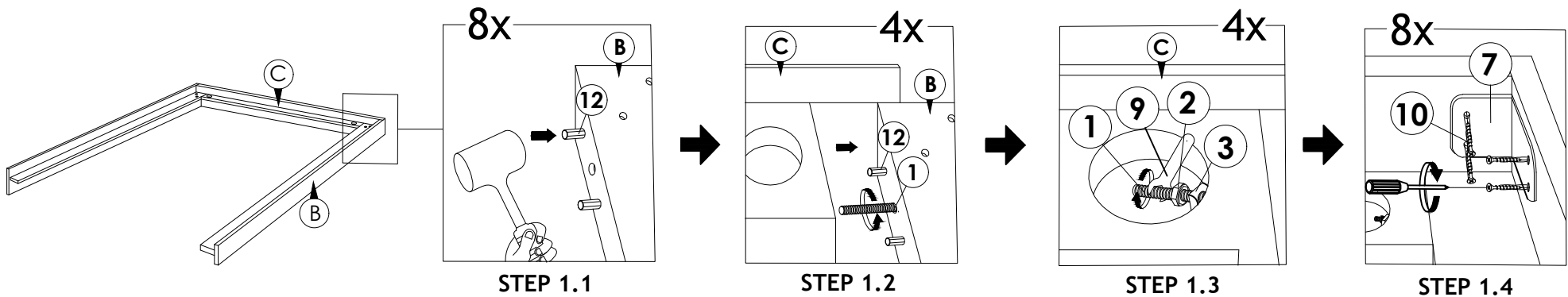
Read this instruction carefully. Refer hardware and furniture parts list for guidance. Be sure all parts are complete, before assembling. Place all wooden furniture part on a clean and flat soft surface to prevent scratcheds. Refer steps provided as assembling guide.

## CAUTIONS :

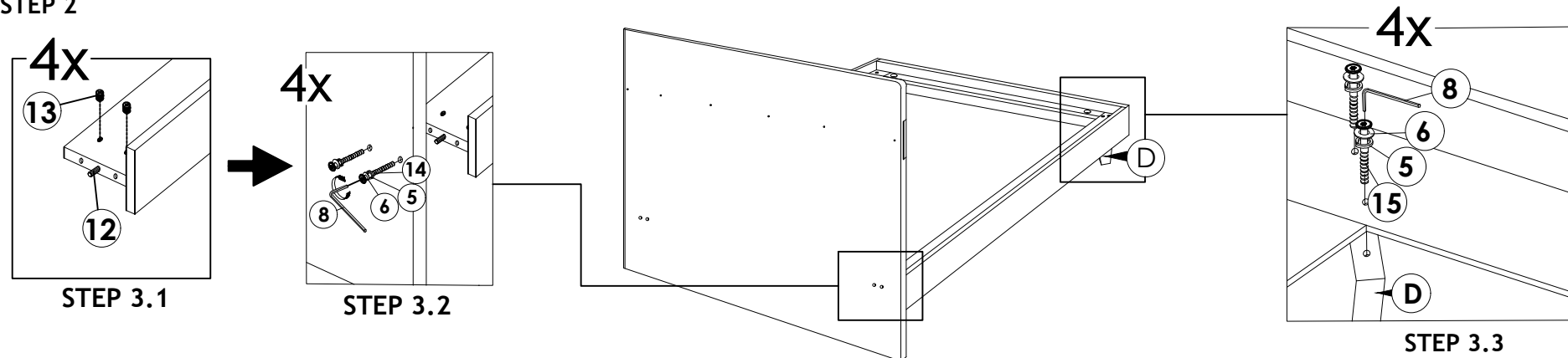
- 1.Do not **FULLY-TIGHTEN** the nuts or nut bolts until all are in place.
- 2.To prevent thread damage.Ensure that nuts or nut bolts are not over-tighten.
- 3.Hardware are to be kept out of reach from children.

PART LIST			HARDWARE LIST		
ITEM	DESCRIPTION	QTY	ITEM	DESCRIPTION	QTY
A	HEADBOARD	1 PC	1	BLOT X 70MM	2 PCS
B	SIDERAIL (L & R)	2 PCS	2	HEX NUT M6	2 PCS
C	FOOTBOARD	1 PC	3	PLASTIC WASHER	2 PCS
D	BED LEG	2 PCS	4	JCBC M6 X 50MM	3 PCS
E	CENTER RAIL	1 PC	5	SPRING WASHER	11 PCS
F	SLAT	13 PCS	6	FLAT WASHER	8 PCS
G	LEG SUPPORT	3 PCS	7	L-BRACKET(BLACK)	4 PCS
			8	M4 ALLEN KEY (SHORT)	1 PC
			9	SPANNER	1 PC
			10	CSK SCREW X 20MM	16 PCS
			11	CSK SCREW X 32MM	28 PCS
14	JCBC M6 x 90MM	4 PCS	12	WOOD DOWEL DIA 8 X 35MM	6 PCS
15	JCBC M6 x 45MM	4 PCS	13	BARREL NUT	4 PCS

## STEP 1



## STEP 2



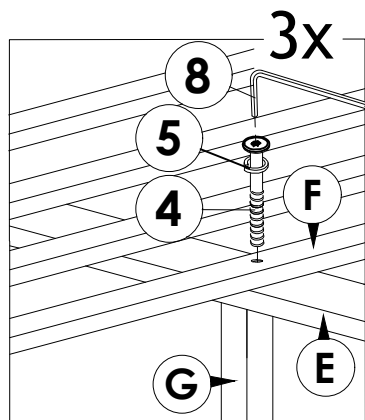
# ASSEMBLY INSTRUCTIONS

Read this instruction carefully. Refer hardware and furniture parts list for guidance. Be sure all parts are complete, before assembling. Place all wooden furniture part on a clean and flat soft surface to prevent scratcheds. Refer steps provided as assembling guide.

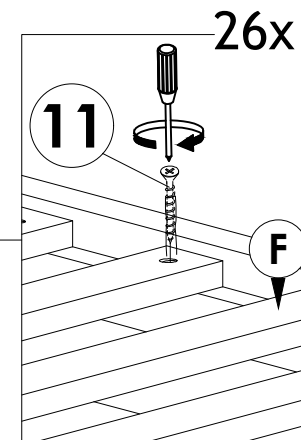
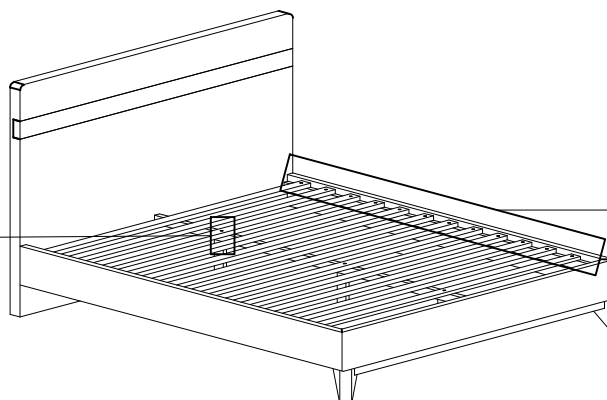
## CAUTIONS :

- 1.Do not **FULLY-TIGHTEN** the nuts or nut bolts until all are in place.
- 2.To prevent thread damage.Ensure that nuts or nut bolts are not over-tighten.
- 3.Hardware are to be kept out of reach from children.

## STEP 3

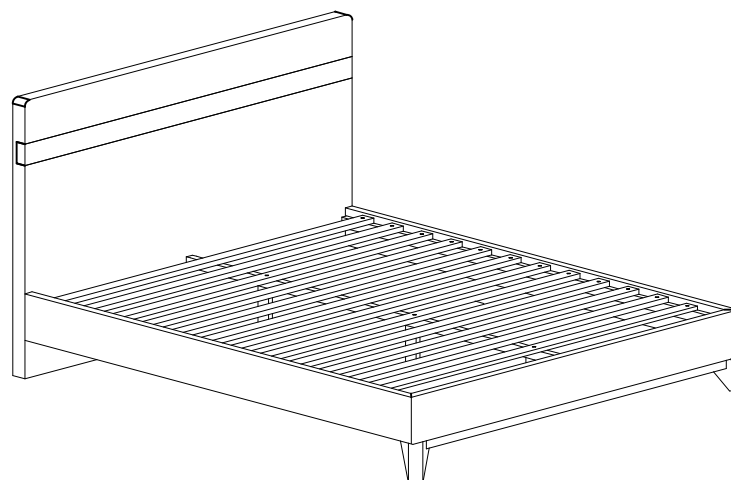


STEP 4.1



STEP 4.2

## STEP 4



ASSEMBLY COMPLETELY