

ASSEMBLY INSTRUCTIONS

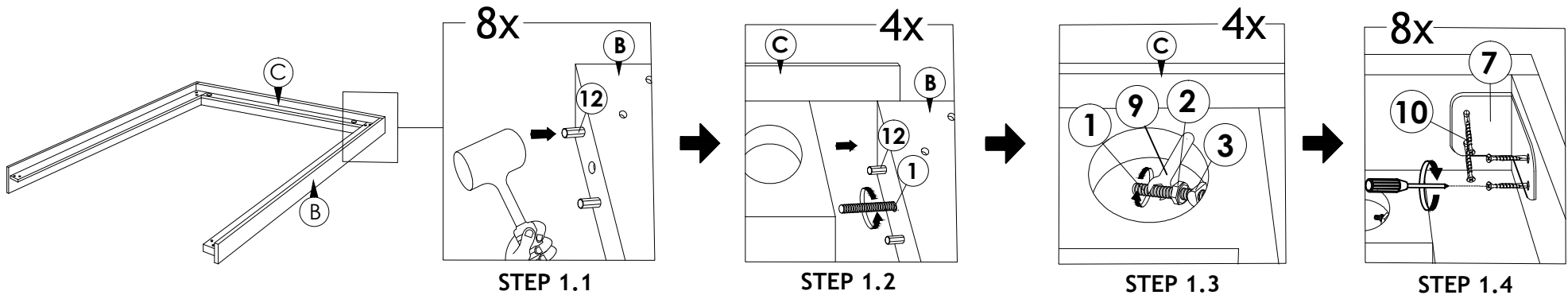
Read this instruction carefully. Refer hardware and furniture parts list for guidance. Be sure all parts are complete, before assembling. Place all wooden furniture part on a clean and flat soft surface to prevent scratcheds. Refer steps provided as assembling guide.

CAUTIONS :

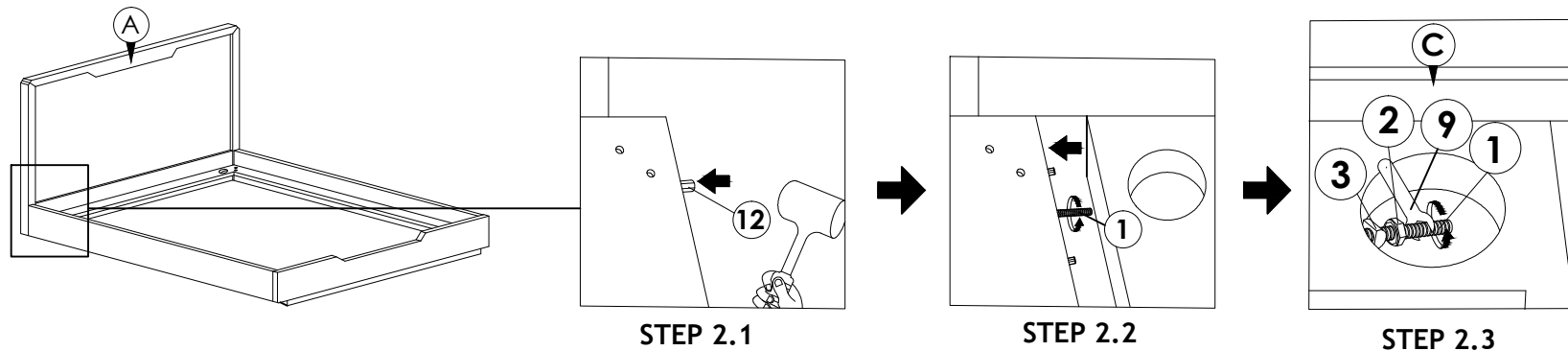
- 1.Do not **FULLY-TIGHTEN** the nuts or nut bolts until all are in place.
- 2.To prevent thread damage.Ensure that nuts or nut bolts are not over-tighten.
- 3.Hardware are to be kept out of reach from children.

PART LIST			HARDWARE LIST		
ITEM	DESCRIPTION	QTY	ITEM	DESCRIPTION	QTY
A	HEADBOARD	1 PC	1	BOLT X 70MM	4 PCS
B	SIDERAIL (L & R)	2 PCS	2	HEX NUT M6	4 PCS
C	FOOTBOARD	1 PC	3	PLASTIC WASHER	4 PCS
D	BED LEG	4 PCS	4	JCBC M6 X 45MM	15 PCS
E	CENTER RAIL	1 PC	5	SPRING WASHER	15 PCS
F	SLAT	13 PCS	6	FLAT WASHER	12 PCS
G	LEG SUPPORT	3 PCS	7	L-BRACKET(BLACK)	2 PCS
			8	M4 ALLEN KEY (SHORT)	1 PC
11	CSK SCREW X 32MM	26 PCS	9	SPANNER	1 PC
12	WOOD DOWEL DIA 8 X 35MM	8 PCS	10	CSK SCREW X 20MM	8 PCS

STEP 1



STEP 2



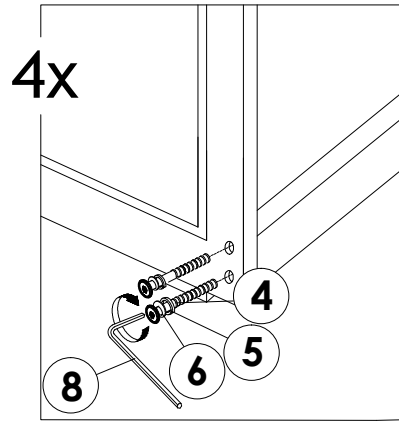
ASSEMBLY INSTRUCTIONS

Read this instruction carefully. Refer hardware and furniture parts list for guidance. Be sure all parts are complete, before assembling. Place all wooden furniture part on a clean and flat soft surface to prevent scratcheds. Refer steps provided as assembling guide.

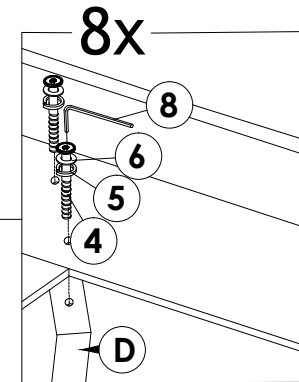
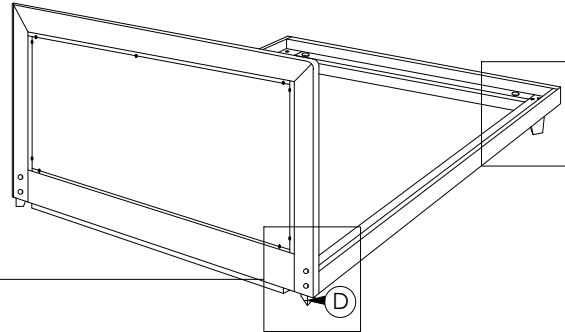
CAUTIONS :

- 1.Do not **FULLY-TIGHTEN** the nuts or nut bolts until all are in place.
- 2.To prevent thread damage.Ensure that nuts or nut bolts are not over-tighten.
- 3.Hardware are to be kept out of reach from children.

STEP 3

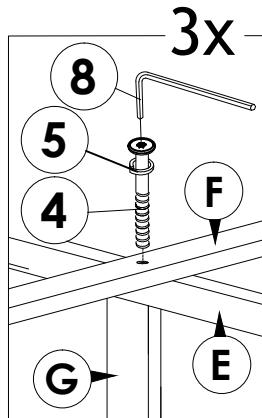


STEP 3.1

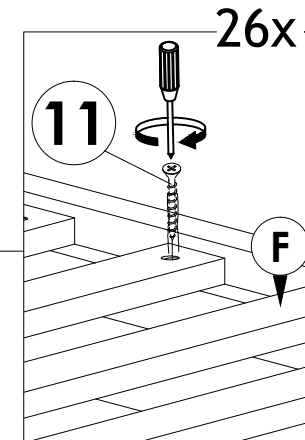
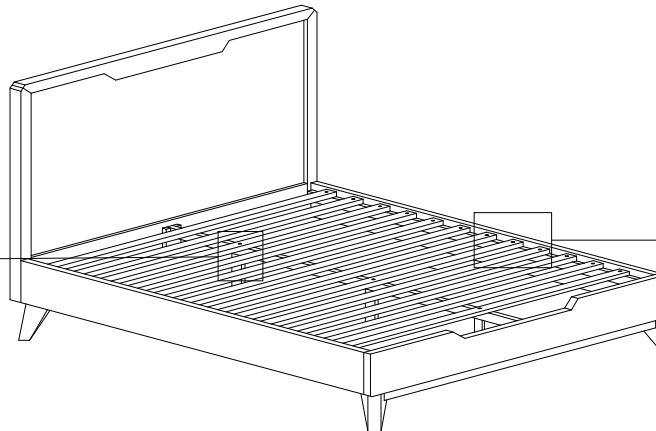


STEP 3.2

STEP 4



STEP 4.1



STEP 4.2

ASSEMBLY COMPLETELY